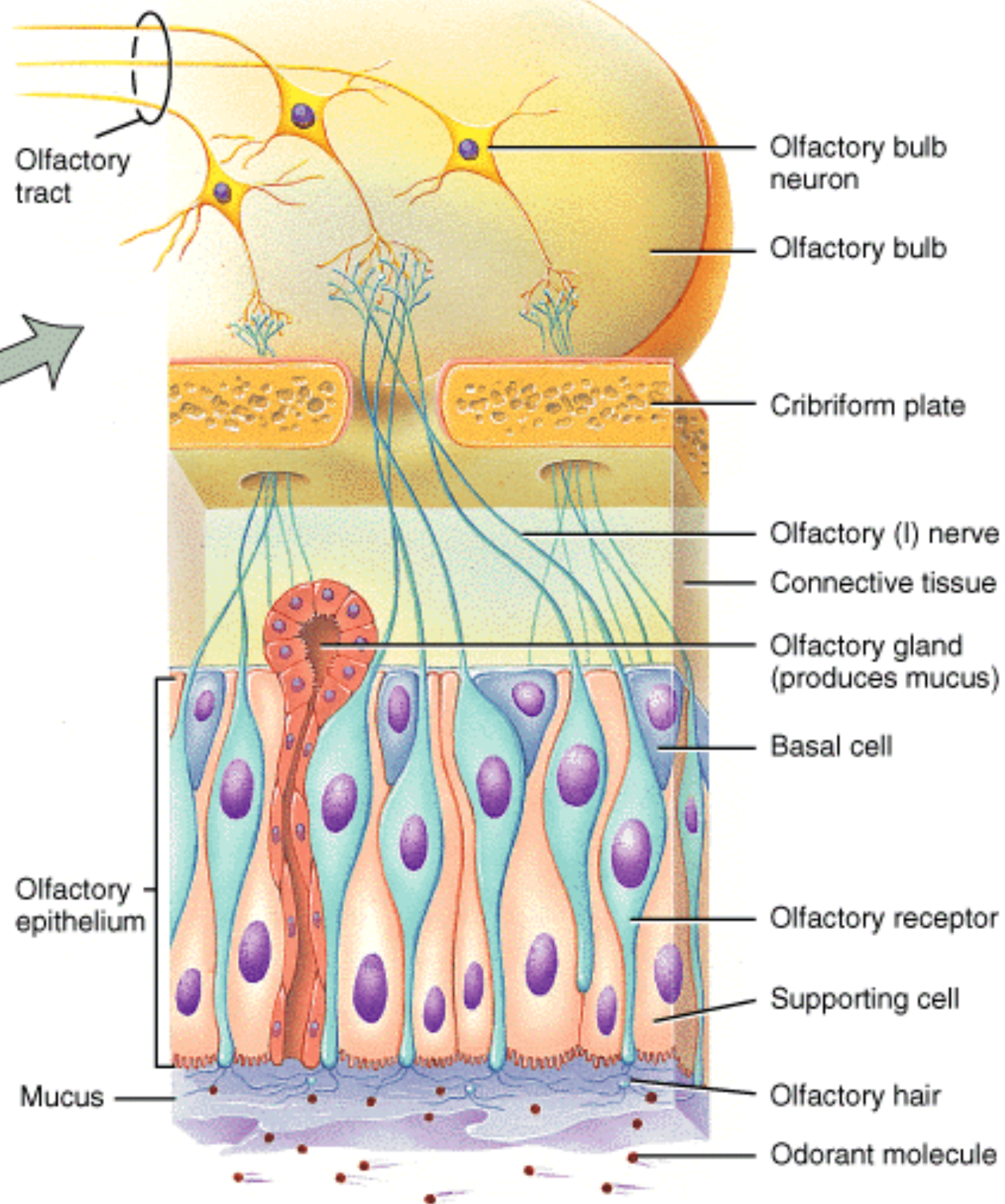
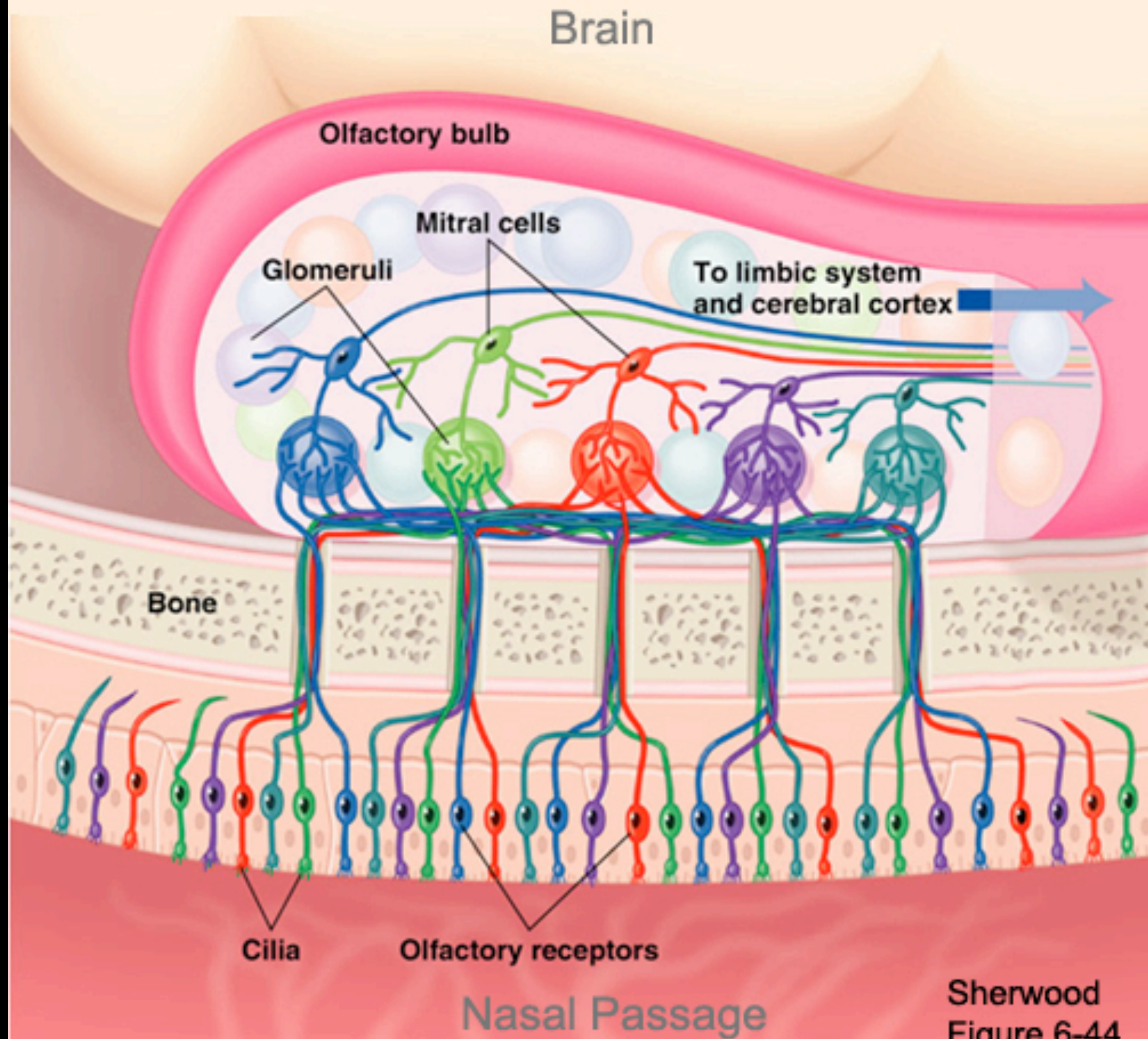


(a) Sagittal view



(b) Enlarged view of olfactory receptors

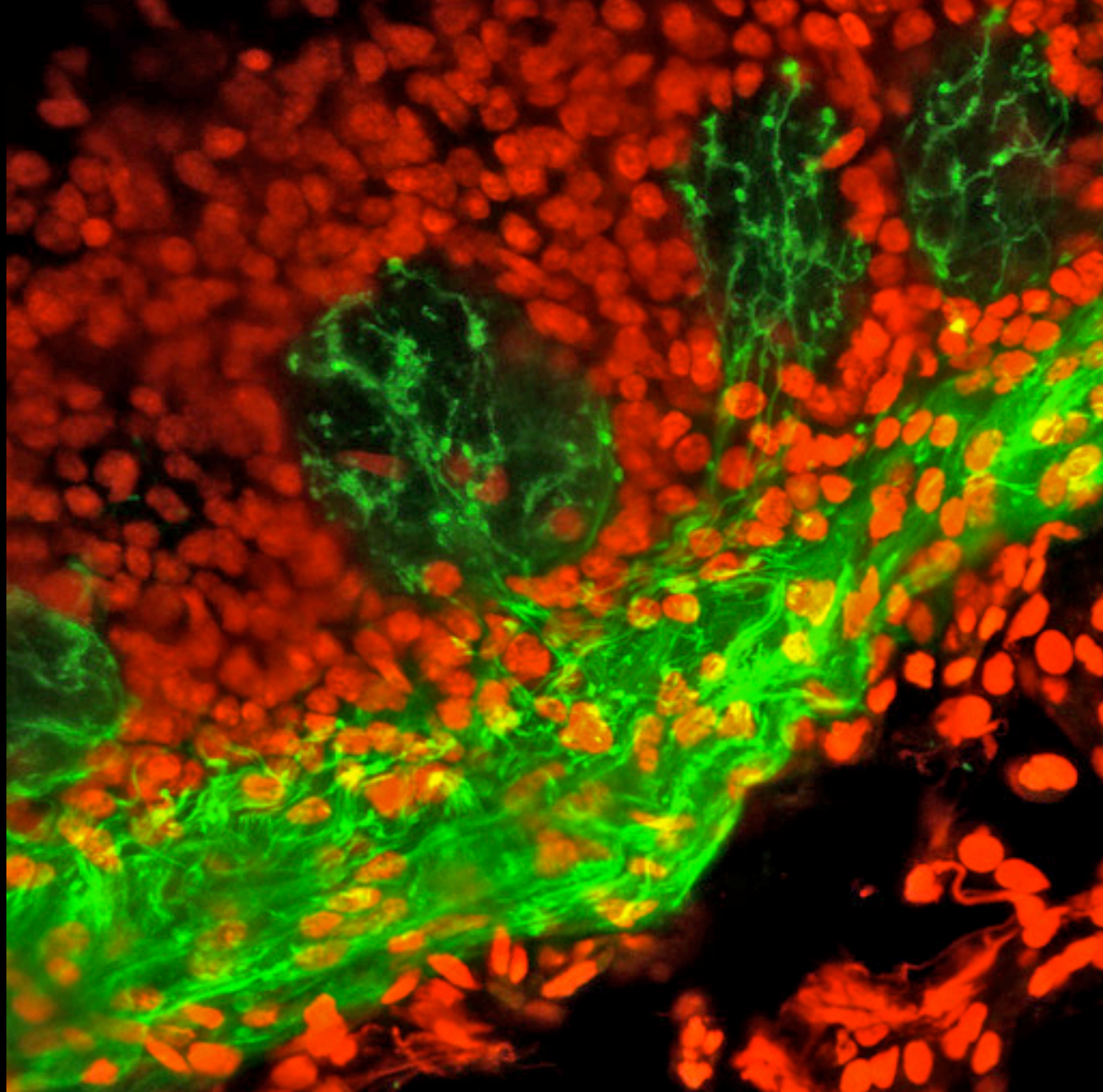


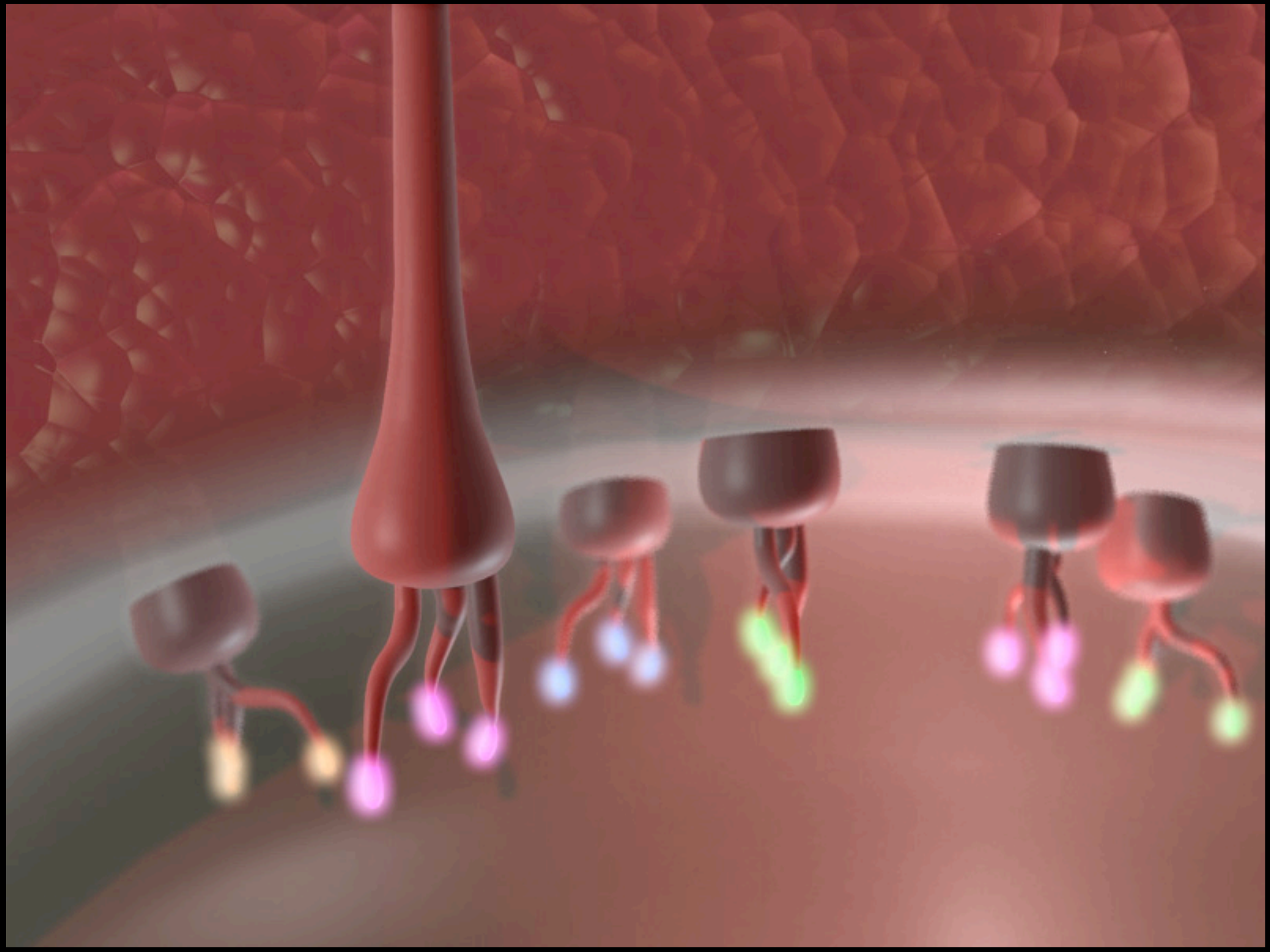
Sherwood
Figure 6-44



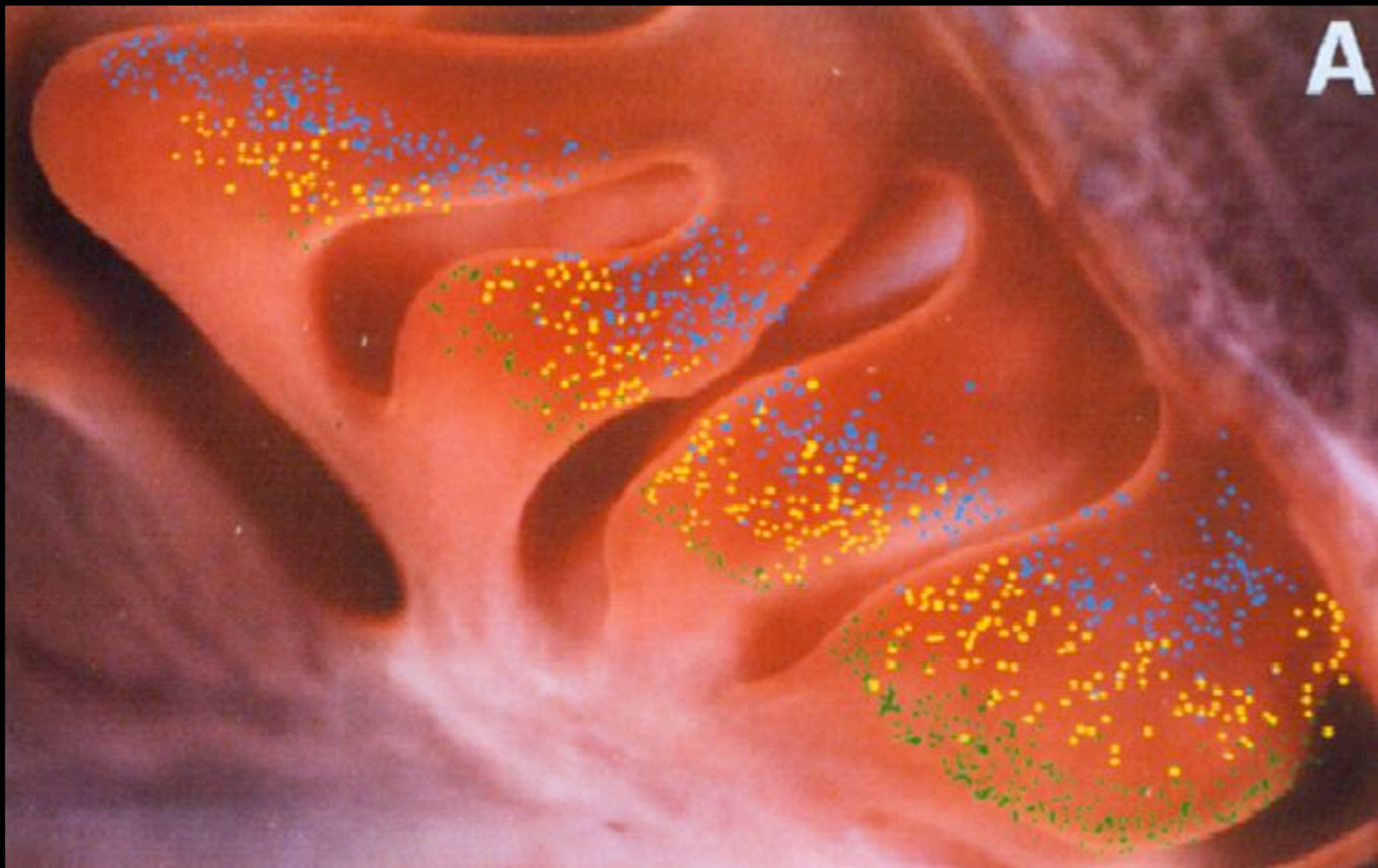
2 microns

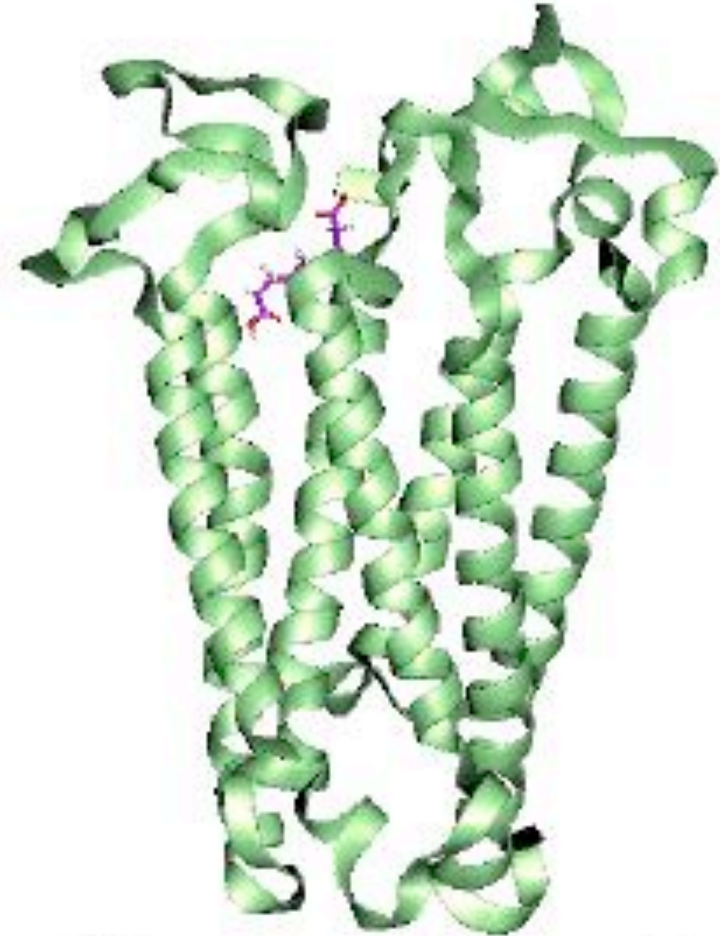
This scanning electron micrograph shows a dense field of elongated, rod-like structures, likely bacterial cells, with a distinct, more complex structure in the upper right. A white scale bar is positioned below the text '2 microns' in the lower-left area of the image.



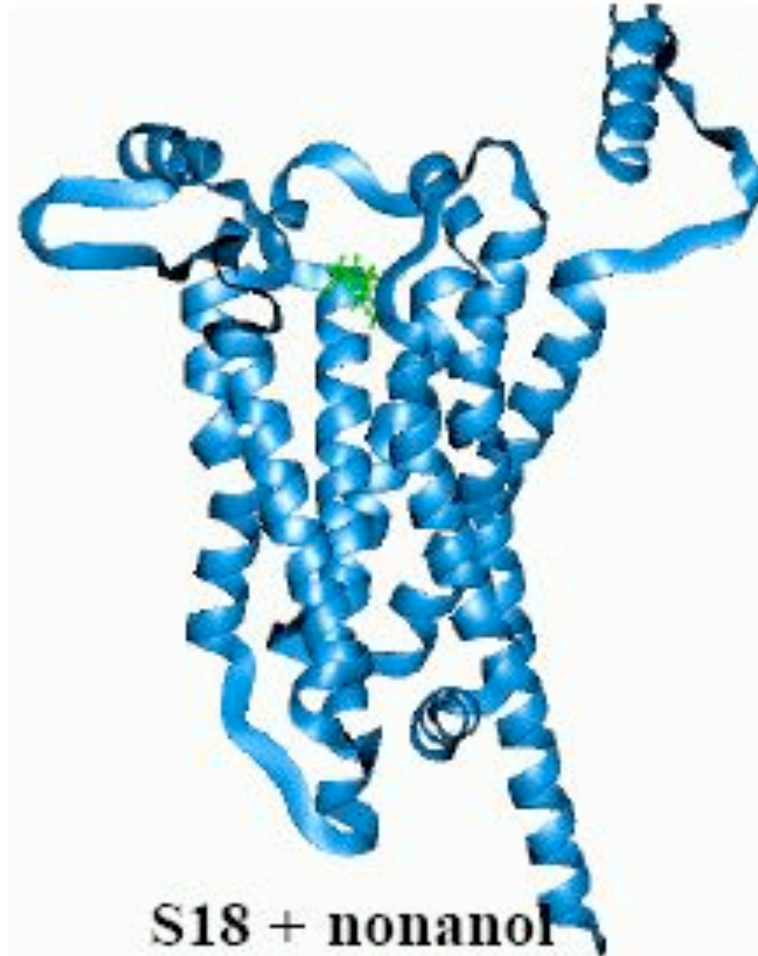


A

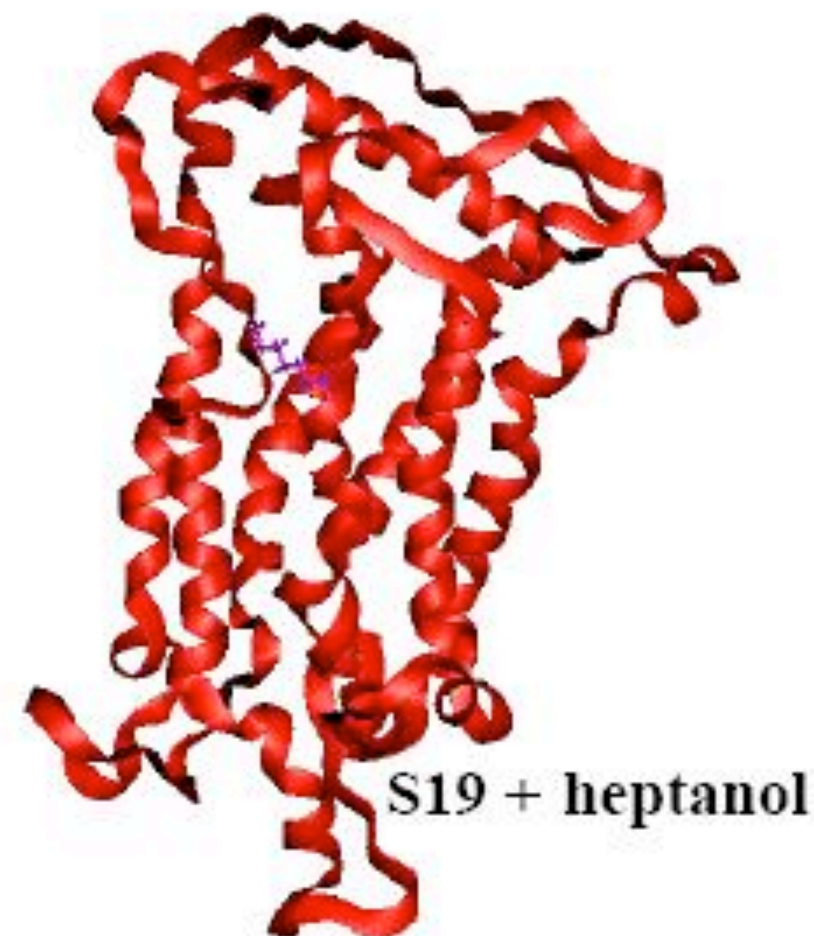




S6 + nonanedioic acid



S18 + nonanol



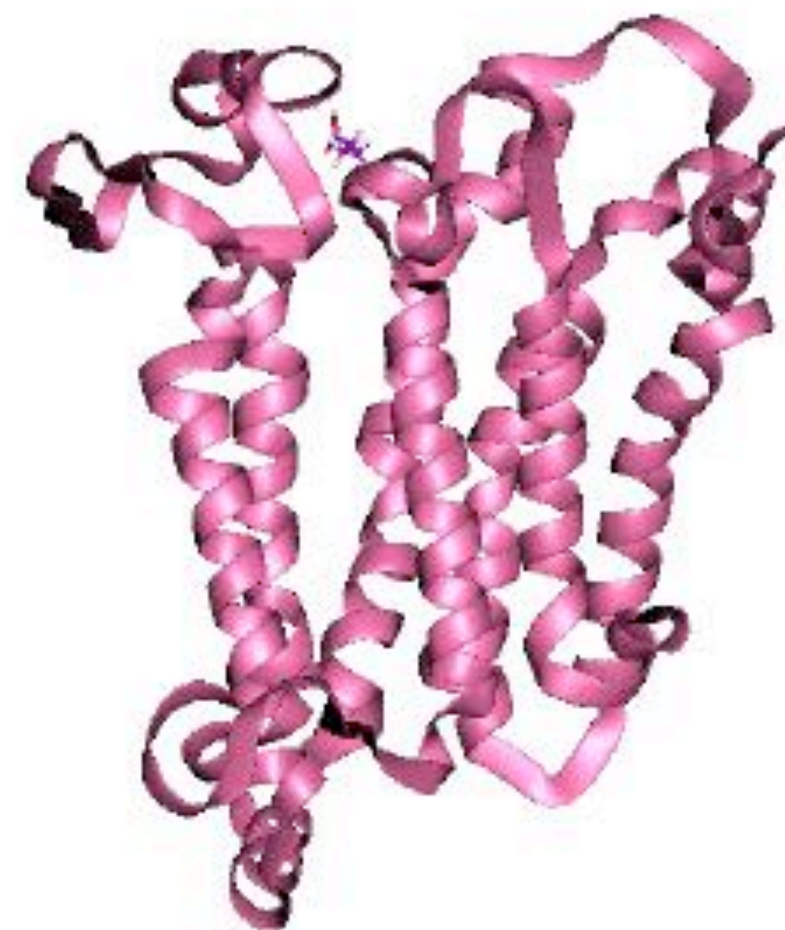
S19 + heptanol



S25 + hexanol



S46 + nonanoic acid



S50 + nonanedioic acid

