



Nelson  
Spelling

# Pupil Book 1A



OXFORD





Nelson  
Spelling

# Pupil Book 1A



OXFORD  
UNIVERSITY PRESS

# OXFORD

UNIVERSITY PRESS

Great Clarendon Street, Oxford, OX2 6DP, United Kingdom

Oxford University Press is a department of the University of Oxford. It furthers the University's objective of excellence in research, scholarship, and education by publishing worldwide. Oxford is a registered trade mark of Oxford University Press in the UK and in certain other countries

Text © John Jackman and Hilary Frost 2015

Illustrations © Marcus Cutler and Elisa Paganelli 2015

The moral rights of the author have been asserted

First published 2015

All rights reserved. No part of this publication may be reproduced, stored in a retrieval system, or transmitted, in any form or by any means, without the prior permission in writing of Oxford University Press, or as expressly permitted by law, by licence or under terms agreed with the appropriate reprographics rights organization. Enquiries concerning reproduction outside the scope of the above should be sent to the Rights Department, Oxford University Press, at the address above.

You must not circulate this work in any other form and you must impose this same condition on any acquirer

British Library Cataloguing in Publication Data

Data available

ISBN: 978-14085-2402-2

1 3 5 7 9 10 8 6 4 2

Paper used in the production of this book is a natural, recyclable product made from wood grown in sustainable forests. The manufacturing process conforms to the environmental regulations of the country of origin.

Printed in Italy by L.E.G.O S.p.A.

### **Acknowledgements**

Cover illustration: Marcus Cutler

Page make-up: OKS Prepress, India

'Green Toad' from *Chronic Phonic* by Constance Milburn, included by permission of the author.



# Contents

<b>Unit 1</b>	letters	<b>4</b>
<b>Unit 2</b>	a e i o u	<b>6</b>
<b>Unit 3</b>	sh th	<b>8</b>
<b>Unit 4</b>	ck nk	<b>10</b>
<b>Unit 5</b>	ch tch	<b>12</b>
<b>Unit 6</b>	s es	<b>14</b>
<b>Unit 7</b>	ing ed er	<b>16</b>
<b>Unit 8</b>	er est	<b>18</b>
<b>Unit 9</b>	ll ff ss zz	<b>20</b>
<b>Unit 10</b>	a-e ai ay	<b>22</b>
<b>Unit 11</b>	ee ea ie e-e	<b>24</b>
<b>Unit 12</b>	i-e ie igh y	<b>26</b>
<b>Unit 13</b>	oa o-e oe ow	<b>28</b>
<b>Unit 14</b>	oo u-e ue ew	<b>30</b>
	Check-up 1	<b>32</b>

# letters



## Key Words

ant  
badger  
crocodile  
dog  
elephant  
fish  
goat  
horse

## Focus

a b c d e f g h i j k l m  
n o p q r s t u v w x y z

Look at the alphabet.

Copy the letters that come after these letters.

The first one is done to help you.

1 a b      2 d \_\_\_      3 r \_\_\_      4 k \_\_\_

5 b \_\_\_      6 w \_\_\_      7 s \_\_\_      8 h \_\_\_





## Extra

Which letters are missing?

Copy the letters and fill in the missing letter.

1 a \_ c

2 g \_ i

3 n \_ p

4 r \_ t

5 x \_ z

6 f \_ h

7 k \_ m

8 d \_ f

9 j k \_

10 r s \_

11 \_ q r

12 \_ n o

## Extension

Write the first letter of these animals' names.

1



a



2



k



3



d



What do you notice?

### Tricky Words

a of if is his I was has

a e i  
o u



**Focus**

Add **a**, **e**, **i**, **o** or **u** to make these words.  
Write the words in your book.

fin hot cut fan hat fun cot hit cat

**Key Words**

at  
cat

get  
let

is  
his

got  
not

but  
mum



1 f\_\_n



2 f\_\_n



3 f\_\_n



4 h\_\_t



5 h\_\_t



6 h\_\_t



7 c\_\_t



8 c\_\_t



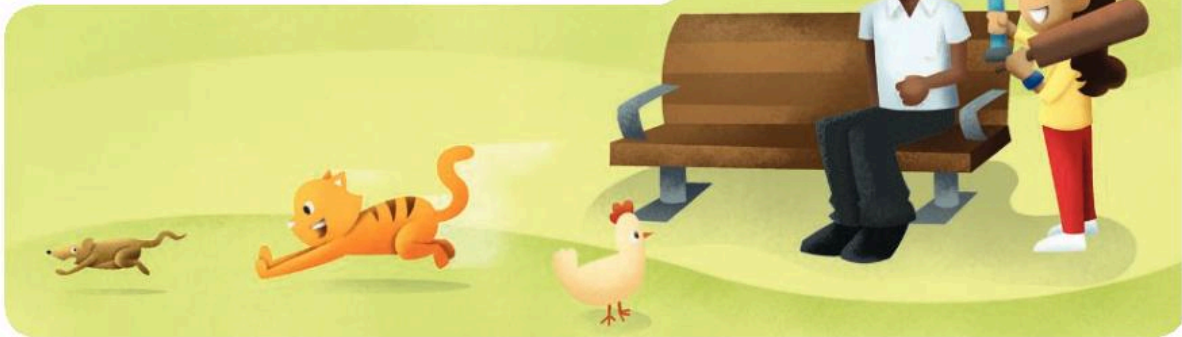
9 c\_\_t



## Extra

Write two words that rhyme with these words:

rat	hen	win	hot	run
hat				
bat				



## Extension

**A** Copy this **and** pattern into your book.

and and and and and

**B** Look at the **and** words in the box.  
Write them in your book.

sand band hand land



1 s \_\_\_\_\_



2 h \_\_\_\_\_



3 l \_\_\_\_\_



4 b \_\_\_\_\_



Key Words

shed  
ship  
shop  
shut

dish  
fish  
wish

the  
them  
then

cloth  
moth

Focus

- A Match the words and pictures.  
Write the words in your book.

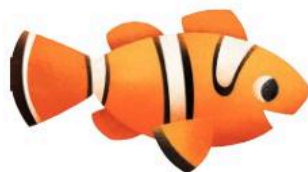
shed fish shop ship cloth moth



1 sh \_\_\_\_\_

2 sh \_\_\_\_\_

3 sh \_\_\_\_\_



4 \_\_\_\_\_ sh

5 \_\_\_\_\_ th

6 \_\_\_\_\_ th

- B Draw a picture to go with a sh word.

## Extra

Copy these sentences.  
Fill in the missing words.

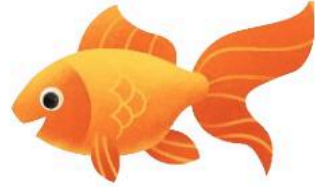
1 shut or ship

The door is \_\_\_\_\_.



2 fish or wish

I have a gold \_\_\_\_\_.



3 think or thank

He said \_\_\_\_\_ you to his mum.



## Extension

What am I?  
Write the answers in your book.

cash    thin    brush    think    crash

- 1 I am a name for money.
- 2 I use my brain to do this.
- 3 You need me when you paint.
- 4 I happen when cars go too fast.
- 5 I am the opposite of thick.

### Tricky Words

the    they    friend



ck  
nk

tick-tock



Key Words

sack  
neck  
peck  
kick  
sock  
duck

bank  
tank

pink  
sink

bunk  
junk

Focus

A Add **ack** or **eck** to make these words.  
Write the words in your book.

peck      neck      sack



1 s \_\_\_\_\_



2 p \_\_\_\_\_



3 n \_\_\_\_\_

B Add **ink** or **unk** to make these words.  
Write the words in your book.

pink      bunk      junk



1 b \_\_\_\_\_



2 p \_\_\_\_\_



3 j \_\_\_\_\_

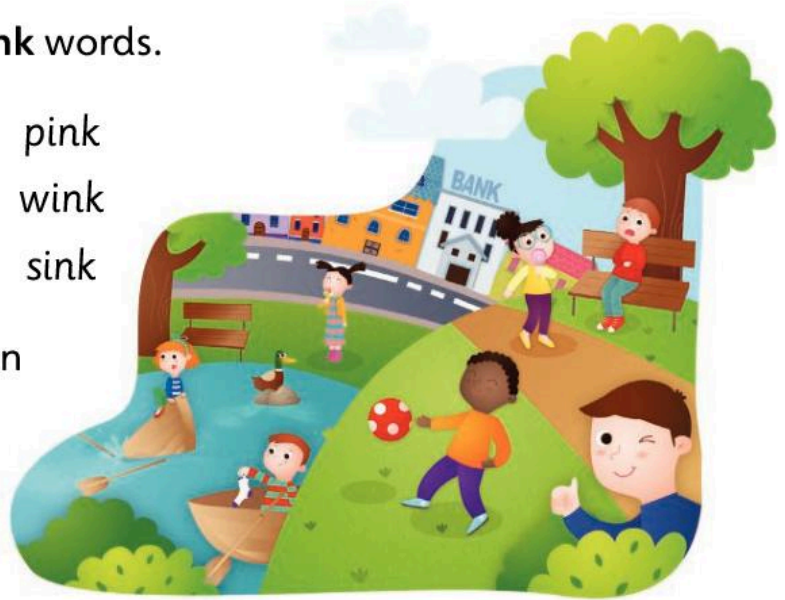


## Extra

Copy these lists of **ck** and **nk** words.

kick lock duck bank pink  
lick rock luck tank wink  
sick sock suck sank sink

Tick the ones you can see in the picture.



## Extension

What are they doing?  
The words in the box will help you.

pick wink peck sink rock kick



1 \_\_\_\_\_ing



2 \_\_\_\_\_ing



3 \_\_\_\_\_ing



4 \_\_\_\_\_ing



5 \_\_\_\_\_ing



6 \_\_\_\_\_ing

ch  
tch



Watch that **cheeky chimp!**

Focus

Match the words and pictures.  
Write the words in your book.

chin  
pitch

chips  
hutch

chimp  
catch

Key Words

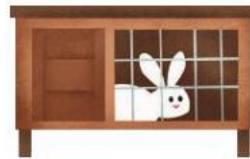
chat  
chick  
chin  
chop

much  
such

catch  
hatch  
match

ditch  
pitch

hutch



1 ch \_\_\_\_\_

2 h \_\_\_\_\_

3 ch \_\_\_\_\_



4 p \_\_\_\_\_

5 ch \_\_\_\_\_

6 c \_\_\_\_\_



## Extra

- A** Each of these sets of jumbled letters makes a **ch** word.  
Can you sort them out?

1 atch                      2 opch                      3 ichmp  
4 chus                      5 ichwh                      6 ichck

- B** Each of these sets of jumbled letters makes a **tch** word.  
Can you sort them out?

1 tchhu                      2 tchdi                      3 tchca



## Extension

- A** Lots of **ch** words have a tricky **t**.  
Write the words from the Focus exercise  
in two lists, like this:

ch words                      tch words  
*chips*                      *hutch*

- B** Write these sentences.  
Choose the best word for each gap.

1 ditch                      pitch  
The ball was kicked off the \_\_\_\_\_  
and into a \_\_\_\_\_.

2 match                      catch  
Her brilliant \_\_\_\_\_ won the \_\_\_\_\_.

3 hatch                      hutch  
We opened the \_\_\_\_\_ to clean the \_\_\_\_\_.



s  
es



Key Words

cats  
girls  
boys  
dogs  
windows

buses  
boxes  
foxes  
bushes  
brushes  
classes  
glasses

Focus

A Match a key word to each of these picture clues. Write the words in your book.

bushes  
girls

foxes  
brushes

boys  
cats



1 b \_\_\_\_\_

2 c \_\_\_\_\_

3 g \_\_\_\_\_



4 f \_\_\_\_\_

5 b \_\_\_\_\_

6 br \_\_\_\_\_

B Write a sentence about one of the pictures.

## Extra

We add **s** to some words when we are talking about more than one thing.

Write these words in your book, adding **s**. Like this:

- |         |             |          |  |
|---------|-------------|----------|--|
| 1 cat   | <b>cats</b> |          |  |
| 1 cat   |             | 2 pot    |  |
| 3 door  |             | 4 table  |  |
| 5 snail |             | 6 tree   |  |
| 7 shed  |             | 8 flower |  |



## Extension

If a word ends with **s**, **x**, **ch** or **sh** we add **es** when we are talking about more than one thing.

**A** Write these words in your book, adding **es**.  
Like this:

- |         |               |         |         |
|---------|---------------|---------|---------|
| 1 wish  | <b>wishes</b> |         |         |
| 1 wish  | 2 class       | 3 fox   | 4 match |
| 5 crash | 6 box         | 7 torch | 8 catch |



We also add **s** and **es** to verbs.

**B** Add **s** or **es** to these words.

- |          |         |         |         |
|----------|---------|---------|---------|
| 1 dog    | 2 like  | 3 watch | 4 flash |
| 5 kitten | 6 porch | 7 wash  | 8 hutch |





# ing ed er



licking    licked    licker

## Key Words

kicking  
licking  
picking

bumping  
jumping

talking  
walking

resting  
testing

## Focus

- A** Match the words and pictures.  
Write the words in your book.

talking  
kicking

licking  
picking

jumping  
walking



1 p \_\_\_\_\_



2 k \_\_\_\_\_



3 l \_\_\_\_\_



4 j \_\_\_\_\_



5 w \_\_\_\_\_



6 t \_\_\_\_\_

- B** Write another **ing** word and draw a picture of it.

## Extra

If something is **happening now**,  
the action often ends with **ing**.

If something has **happened already**,  
the action often ends with **ed**.

If somebody is doing something,  
the noun often ends with **er**.

Copy this table of action words and their nouns.  
Fill in the missing words.

happening now	already happened	noun
kicking	kicked	kicker
picking		
	licked	
		talker
	walked	

## Extension

Match a word to each picture.

rubbing

sitting

dripping

cutting



1 \_\_\_\_\_



2 \_\_\_\_\_



3 \_\_\_\_\_



4 \_\_\_\_\_

What do you notice about these **ing** words?

er  
est



long

longer

longest

Focus

Match a key word to each of these picture clues.  
Write the words in your book.

Key Words

longer  
longest

quicker  
quickest

deeper  
deepest

colder  
coldest

smaller  
smallest

taller  
tallest



1 tall \_\_\_\_\_



2 t \_\_\_\_\_



3 t \_\_\_\_\_



4 small \_\_\_\_\_



5 s \_\_\_\_\_



6 s \_\_\_\_\_



7 quick \_\_\_\_\_



5 q \_\_\_\_\_



6 q \_\_\_\_\_



## Extra

- A** Add **er** to each of the words in the box.  
Write them neatly in your book, like this:

cold     *colder*

cold   weak   fresh   light   rich   deep

- B** Write one of the words you have made  
in a sentence.

## Extension

- A** Add **est** to each of the words in the box.  
Write them neatly in your book, like this:

cold     *coldest*

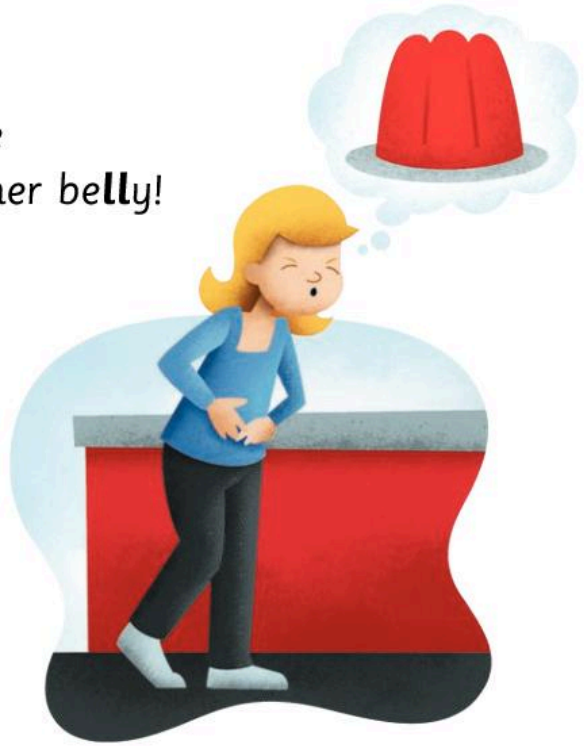
cold   weak   fresh   light   rich   deep



- B** Write one of the words you have made  
in a sentence.

ll ff  
ss zz

Jess ate fluff,  
And fizzy jelly,  
Jess went home  
With a pain in her belly!



Key Words

off  
puff  
cliff

bell  
tell  
smell

fill  
mill

dress  
press  
cross

buzz  
fizz

Focus

A Match a key word to each of these picture clues.  
Write the words in your book.



1 b \_\_\_\_\_



2 dr \_\_\_\_\_



3 cl \_\_\_\_\_

B What are they doing?  
Write the words in your book.



1 b \_\_\_\_\_ ing



2 f \_\_\_\_\_ ing



3 dr \_\_\_\_\_ ing

## Extra

Copy these lists of **ll**, **ff**, **ss** and **zz** words.

hill	bell	huff	dress	buzz
mill	fell	puff	press	fizz
pill	yell	cliff	cross	jazz



## Extension

To make the plural of most nouns we add **s**.  
one puff      two puffs

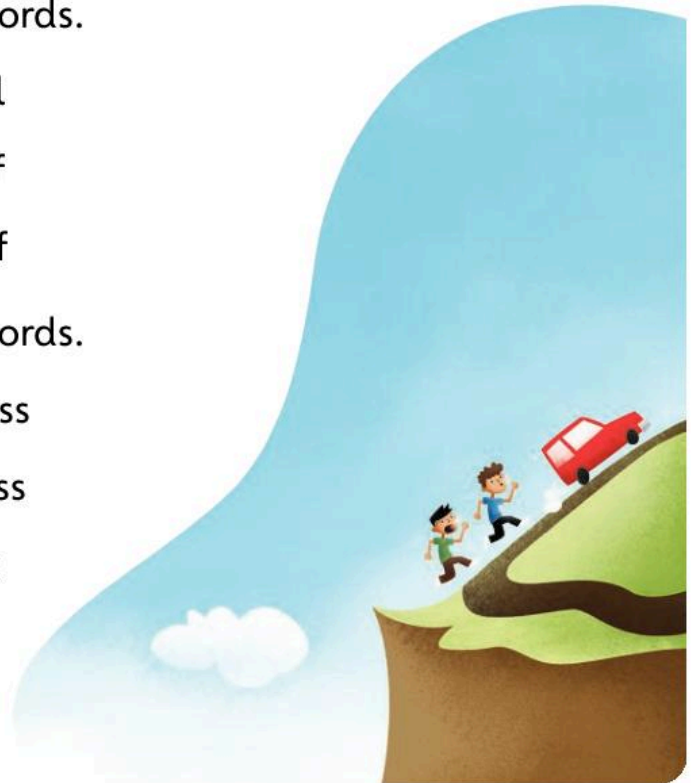
But if the word ends with **ss** we add **es**.  
one dress      two dresses

**A** Write the plural of these words.

- |        |         |
|--------|---------|
| 1 hill | 2 bell  |
| 3 pill | 4 cliff |
| 5 huff | 6 cuff  |

**B** Write the plural of these words.

- |         |         |
|---------|---------|
| 1 mess  | 2 press |
| 3 grass | 4 cross |
| 5 buzz  | 6 fizz  |



a-e  
ai ay



A snail **ate** the **flake** on my birth**day** **cake**!

**Focus**

Match the words and pictures.  
Write the words in your book.

cake rake wave case gate lake



1 r \_\_\_\_\_

2 c \_\_\_\_\_

3 l \_\_\_\_\_



4 c \_\_\_\_\_

5 w \_\_\_\_\_

6 g \_\_\_\_\_

**Key Words**

came  
game  
same  
blame  
flame

tail  
nail  
snail

ray  
tray  
stray  
play

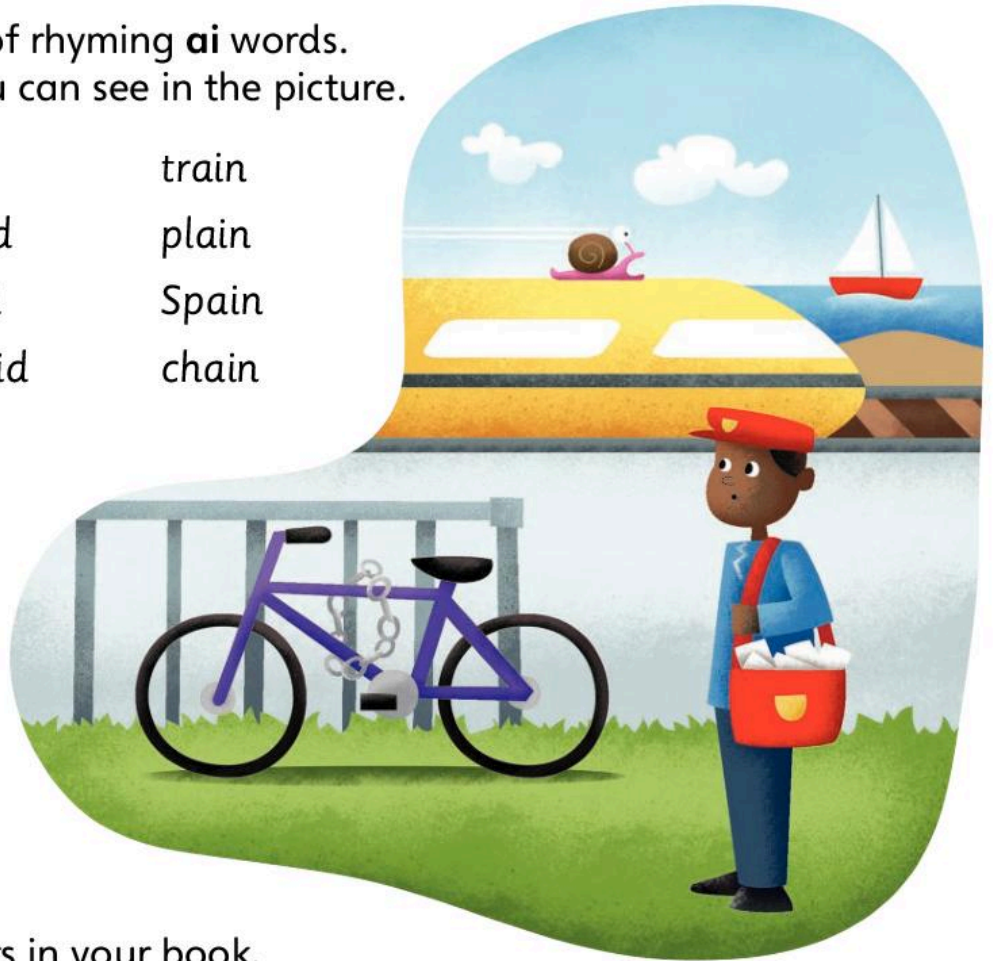
day  
today



## Extra

Copy these lists of rhyming **ai** words.  
Tick the ones you can see in the picture.

rail	raid	train
snail	maid	plain
mail	paid	Spain
sail	afraid	chain



## Extension

What am I?  
Write the answers in your book.

bay clay hay day tray today

- 1 I am found at the seaside.
- 2 I'm the opposite of night.
- 3 I'm dried grass.
- 4 I'm used to make pots.
- 5 I carry cups and plates.
- 6 I'm the day before tomorrow.

### Tricky Words

today said says



ee ea  
ie e-e



Can you **see** the **bees** in the **tree**?  
They make the honey I **eat** for my **tea**.

Key Words

bee  
see  
tree

feed  
seed  
weed

sea  
tea  
pea

eat  
meat  
clean

these  
chief

Focus

Find a key word to match each picture.  
Write the words in your book.



1 b \_\_\_\_\_



2 t \_\_\_\_\_



3 s \_\_\_\_\_



4 s \_\_\_\_\_



5 e \_\_\_\_\_



6 p \_\_\_\_\_



## Extra

Find seven **ie** and **e-e** words hidden in this puzzle.

k	g	g	f	g	c	s	n	t
x	l	r	i	b	s	t	q	h
b	r	i	e	f	l	h	e	e
q	s	e	l	k	w	i	f	s
z	x	f	d	t	h	e	m	e
c	h	i	e	f	d	f	z	i



Sometimes **ie** and **e-e** can sound like **ee** and **ea**, like **chief**, these.

## Extension

What am I doing?

The words in the box will give you a clue.

weed      teach      bleed      scream  
meet      sleep      eat      clean



Adding **ing** means it is happening now.



1 \_\_\_\_\_ ing



2 \_\_\_\_\_ ing



3 \_\_\_\_\_ ing



4 \_\_\_\_\_ ing



5 \_\_\_\_\_ ing



6 \_\_\_\_\_ ing



7 \_\_\_\_\_ ing



8 \_\_\_\_\_ ing

## Tricky Words

be he me we she these

i-e ie  
igh y



I **like** to be safe in **my** home at **night**.

**Focus**

Match a key word to each of these picture clues.  
Write the words in your book.

**Key Words**

bike  
like

dive  
five

tie  
pie

high  
fight  
light  
might  
bright

my  
cry  
fly  
shy  
why



1 b \_\_\_\_\_



2 d \_\_\_\_\_

5

3 f \_\_\_\_\_



4 t \_\_\_\_\_



5 p \_\_\_\_\_



6 l \_\_\_\_\_



7 s \_\_\_\_\_



8 c \_\_\_\_\_



9 f \_\_\_\_\_

## Extra

What am I doing?

Find a word in the box to match each picture.

crying  
flying

drying  
fighting

frying  
lighting



1 l \_\_\_\_\_



2 fr \_\_\_\_\_



3 fl \_\_\_\_\_



4 f \_\_\_\_\_



5 cr \_\_\_\_\_



6 dr \_\_\_\_\_

## Extension

bit sit kit pin fin pip rip

- A** Copy the words in the box.  
Now add a 'magic' e to the end of each one,  
like this:

bit bite

- B** Which of your new words match these clues?  
Write the answers in your book.

- 1 It flies in the sky.
- 2 This is the place where builders work.
- 3 To eat you do this.
- 4 It carries water to a tap.
- 5 Fruit like this is ready to eat.

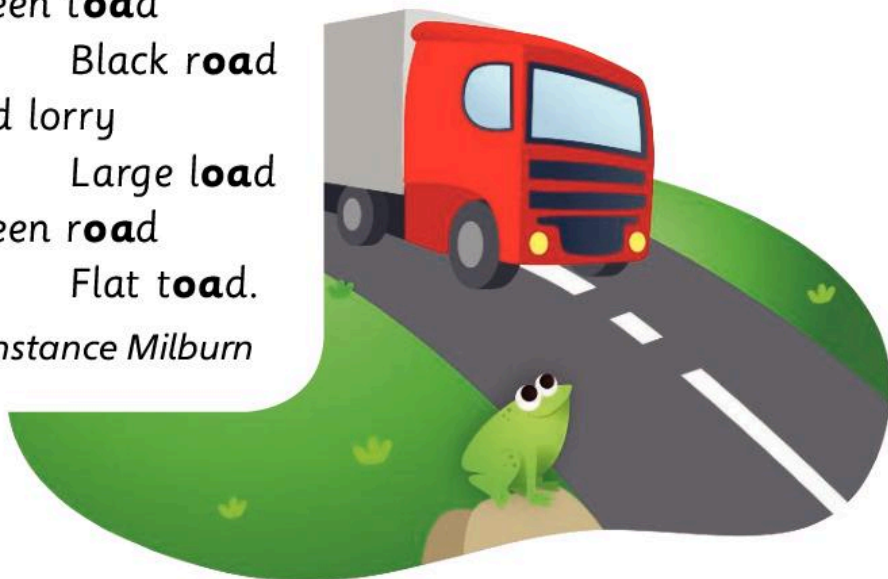


**Tricky  
Words**

live give

oa o-e  
oe ow

Green **toad**  
Black **road**  
Red **lorry**  
Large **load**  
Green **road**  
Flat **toad**.  
*Constance Milburn*



### Key Words

boat  
coat

load  
road  
toad

smoke  
choke  
alone  
stone

snow  
blow  
show

toes  
goes

### Focus

- A** Look at the poem again.  
Copy the words with the **oa** pattern.
- B** Find two **o-e** words and two **ow** words  
in this picture.  
Write them neatly in your book.





## Extra

grow      boast      flow      broke      coast      toes      blow  
smoke      toast      throw      choke      roast      spoke      goes

Sort the words in the box into rhyming families, like this:

<b>oke</b> words	<b>oast</b> words	<b>oes</b> words	<b>ow</b> words
broke	boast	goes	blow



## Extension

These words have the **oa** sound but do not have **oa**, **o-e** or **ow**.

most      post      host      almost

Match a word from the box with each clue.

- 1 letters and parcels
- 2 nearly all
- 3 nearly
- 4 looks after visitors

### Tricky Words

go      no      so

oo  
u-e  
ue ew



Key Words

zoo

boot

hoot

moon

soon

room

zoom

new

chew

screw

June

tune

blue

glue

Focus

Match the words and pictures.  
Write the words in your book.

zoo boot moon spoon food roof



1 b \_\_\_\_\_



2 sp \_\_\_\_\_



3 r \_\_\_\_\_



4 z \_\_\_\_\_



5 m \_\_\_\_\_



6 f \_\_\_\_\_



## Extra

Copy and finish these word sums.

- 1 m + oo = moo
- 2 br + oo + m =
- 3 f + ew =
- 4 st + ew =
- 5 J + u + n + e =
- 6 c + u + b + e =
- 7 gl + ue =
- 8 tr + ue =
- 9 c + oo + t =
- 10 st + oo + p =



## Extension

new root glue few clue hoot  
dew shoot blue chew true scoot

Sort the words in the box into letter pattern families, like this:

ew words	oot words	ue words
new	root	glue

### Tricky Words

school to do



# Check-up 1

## Focus

Write a word to match the picture.



1 c \_\_\_\_\_



2 h \_\_\_\_\_



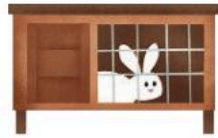
3 f \_\_\_\_\_



4 d \_\_\_\_\_



5 ch \_\_\_\_\_



6 h \_\_\_\_\_



7 b \_\_\_\_\_



8 l \_\_\_\_\_



9 d \_\_\_\_\_



10 s \_\_\_\_\_



11 b \_\_\_\_\_



12 f \_\_\_\_\_



13 b \_\_\_\_\_



14 m \_\_\_\_\_



15 s \_\_\_\_\_



16 b \_\_\_\_\_

## Extension

Write two words that rhyme with:

1 park

2 cry

3 dish

4 mess

5 toad





# Nelson Spelling

## The essential course for success in spelling

*Nelson Spelling* provides a whole-school programme for the teaching of spelling. Focused units cover all the essential spelling patterns and rules, with plenty of practice, repetition and assessment built in. The course is designed to be simple to use, with three levels of differentiation as well as placement tests and formative assessment materials to help ensure that all children are on track.

The course provides:

- Differentiated materials for plenty of practice, extension and reinforcement
- A clear progression and full curriculum coverage
- Support for assessing children's knowledge and understanding in preparation for national tests

# Pupil Book 1A

**OXFORD**  
UNIVERSITY PRESS

**How to get in touch:**

**web** [www.oxfordprimary.co.uk](http://www.oxfordprimary.co.uk)  
**email** [primary.enquiries@oup.com](mailto:primary.enquiries@oup.com)  
**tel.** +44 (0) 1536 452610  
**fax** +44 (0) 1865 313472

ISBN 978-1-4085-2402-2



9 781408 524022