

FREQUENCY WARFARE



WARNING

The Emergency Broadcast Alert (EBS) System

Set to Activate on October 4, 2023

THIS TEST MAY NOT BE WHAT YOU THINK

UNDERSTAND WHAT YOU MAY FACE

TAKE ACTION!

=====

**U.S. FEMA Cellphone, TV & Radio Emergency Alert Test set for
October 4, 2023**

See pivotal article below:

<https://www.delawareonline.com/story/news/2023/09/19/us-fema-cellphone-tUS-FEMA-cellphone-TV-&radio-emergency-alert-test-set-for-October-4v-radio-national-emergency-alert-test-set-october-4/70889498007/>

Two national emergency alert systems will be tested on Oct. 4, 2023

Here's what to know:

<https://www.delawareonline.com/story/news/2023/09/19/us-fema-cellphone-tv-radio-national-emergency-alert-test-set-october-4/70889498007/>

What is the nationwide test?

The [Federal Emergency Management Agency](#) (FEMA) in coordination with the [Federal Communications Commission](#) (FCC) will conduct a [nationwide test](#) of the Emergency Alert System (EAS) and Wireless Emergency Alerts (WEA).

When will the nationwide test happen?

The national test consists of two portions that will test the capabilities of the WEA and the EAS. Both tests are scheduled to begin at approximately 2:20 p.m. ET on Wednesday, Oct. 4, according to FEMA. CAUTION – We cannot rely on the time specified!

If the Oct. 4 test is postponed due to widespread severe weather or another significant event, a back-up testing will take place on Wednesday, Oct. 11.

Why are the emergency alert systems being tested?

According to FEMA, the purpose of the test on Oct. 4 is to ensure that each system continues to effectively warn the public about emergencies, particularly those on the national level. People need to understand that there is more behind this test than we are being told. People also need to understand that **FEMA is not federal. FEMA manages the aftermath of pre-planned attacks.** FEMA is a “lethal” agency that creates emergencies so that they can manage them and create their alleged desired “lethal” goals.

Backdoor access to your wireless devices has been secretly granted to create a blacklist of individuals to target.

The World Economic Forum has been quietly granted backdoor access to billions of cellphones as part of a plot to compile “blacklists” of users who hold “politically incorrect” views and commit “wrong speak...”



Targeted Individuals, for many years, have been tracked, monitored, injured, and murdered from frequencies from many devices including (but not limited to) cell phones.

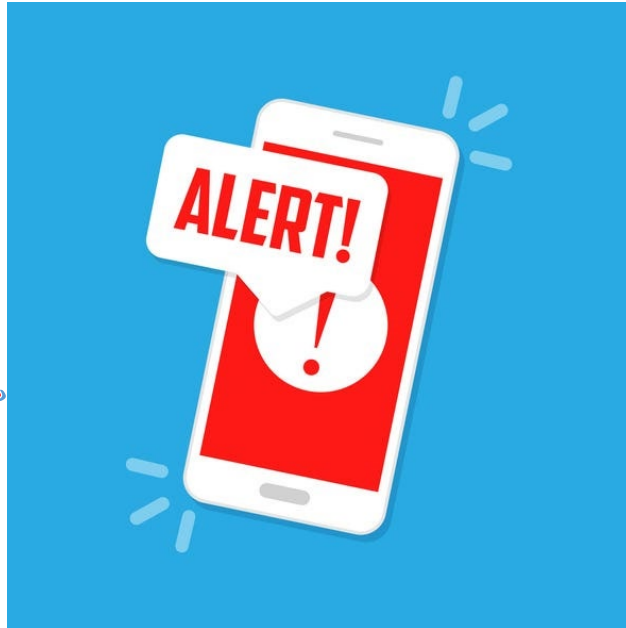
When electronic devices are in CLOSE proximity, they can exchange an individual's full ID between electronic devices. After a period of time, it can analyze the IDs stored in the electronic device and generate a Social Credit Score. After a subsequent period of time, they can change the individual's partial ID with a new one, reflecting information garnered from the cell phone as a result of the EBS.

WARNING - Testing ALL Wireless Connectivity WILL secretly allow deployment of the Social Credit Scoring System (CSQR-SM).

Read: <https://patentimages.storage.googleapis.com/68/80/73/6a17a66e9ec8c5/US11107588.pdf>

What will happen during the test?

**Alerts to your
Cell phone are
frequency
weapons!**



The WEA portion of the test will go directly to all consumer cell phones. It is the third nationwide test but only the second to be directed to all cellular devices.

FEMA reports that the text message will display in either English or Spanish for each consumer, depending on the language settings of their phone.

The EAS portion of the test will be sent to all radios and televisions. This is the seventh nationwide EAS test.

Details on the WEA test

The [WEA portion of the test](#) will use FEMA's Integrated Public Alert and Warning System (IPAWS), a centralized internet-based system that enables authorities to send emergency messages to the public through various communications networks.

This test will be administered via a code sent to cell phones. All wireless phones should receive the message only once.

Cell towers will broadcast the test for approximately 30 minutes, during which all WEA-compatible phones that are on, within range of an active cell tower and whose wireless provider participates in WEA, should be capable of receiving the message, according to FEMA.

The test message will say, "THIS IS A TEST of the National Wireless Emergency Alert System. No action is needed," or "ESTA ES UNA PRUEBA del Sistema Nacional de Alerta de Emergencia. No se necesita acción," for phones with the main menu set to Spanish.

It will be accompanied by a unique tone and vibration.

All major providers participate in WEA on a voluntary basis. To find out if your phone can receive WEA alerts, you can contact your wireless provider.

Details on the EAS test

The [EAS message](#) will be sent out as a Common Alerting Protocol message via the IPAWS-Open Platform for Emergency Networks.

The test is scheduled to last for approximately one minute and will be conducted with the participation of radio and television broadcasters, cable systems, wireline video providers and satellite radio and television providers, according to FEMA.

The test message will be similar to the monthly tests the public is familiar with. It will say, "this is a nationwide test of the Emergency Alert System, issued by the Federal Emergency Management Agency, covering the United States from 14:20 to 14:50 hours ET. This is only a test. No action is required by the public."



CELL PHONES and "ALL WIRELESS" TECHNOLOGIES are DIRECTED ENERGY WEAPONS



TARGETED INDIVIDUALS' PHONES CAN BE PULSED AT HIGHER
DEADLIER FREQUENCIES

SATELLITE FREQUENCIES – CAN BE BEAMED TO SPECIFIC INDIVIDUALS WITH INCREASED FREQUENCIES & CAN RESULT IN HUMAN COMBUSTION. Keep in mind that all porous materials are packed with heavy metals from years of geo-engineering. This includes metals in all foods, water, and the air...which now can cause spontaneous human combustion.

https://satellitemap.space/?constellation=starlink&utm_source=substack&utm_medium=email

SMART METERS – THE GLOBAL SMART GRID CAN BE PULSED

WIRELESS ELECTRIC METERS, GAS METERS, AND WATER METERS

The smart meters could likely be pulsed on Wednesday October 4, 2023 during FEMA's Emergency Alert Broadcast. The wireless smart meters can be remotely pulsed with INCREASED FREQUENCIES and injure and KILL in our homes, businesses, and ALL OTHER BUILDINGS. Also, transient frequencies can be sent into internal electrical wiring which can travel into the air and into us. This is dirty electricity. Even if you don't have a smart meter on your home the neighborhood area network (houses near you with smart meters) creates densified deadly frequencies.

DIRTY ELECTRICITY

DIRTY ELECTRICITY

www.DirtyElectricity.net

WILL KILL YOU –

Electrical pollution is not something we see, smell, taste or touch, yet it has become the greatest polluting element in the earth's environment.

Dr. Sam Milham is a scientist, Whistleblower.

“This is an industry cover up of the toxic facts, by electric utility companies, the cell phone industry, public utility commissions, state health departments and the FDA.”



The basic frequency on the power lines of electrical power delivered to our homes and other buildings is now increased with an “added” higher frequency polluting electrical voltage and currents, delivering that higher frequency power into the wiring and into the devices in our homes, offices, and schools. Dirty electricity does not need a direct wire connection, it connects through the air, traveling into the human body from the wiring that carries the power. Once in the human body, these high frequencies cause cancer and many other diseases. Smart meters, cell towers, cell antennas, cell phone chargers, computers, copiers are a few common sources of dirty electricity.

Dirty Electricity Will Damage the Entire Human Population.

FREQUENCIES ARE IN THE AIR!

Also, many building codes do not have ground rods that are driven into the earth. Many current codes only require the grounding into the concrete foundation – however, earth-driven rods are a preferred ground. The effective earth-driven grounding sends the frequencies into the ground... transferring the EMF away. Most grounding is not what it should be - which adds to dirty electricity.

On 10-4-2023 it is advised that you distance yourself from neighborhoods and city areas. Try to find a location where you have no cell coverage and put your cellphone into a Mission Darkness Military EMF (Electromagnetic Frequency) Bag where frequencies are prevented. Remember...you cannot turn your cellphones off to prevent cell towers continuing to pulse and connect to your phone.

Cell phones are WEAPONS

OPT OUT of YOUR WIRELESS SMART METER - Contact your Utility and tell them you want your smart electric meter removed and replaced with the original "legacy" analogue electric meter - a meter reader will be required to read this meter in order for the utility to bill you for electric usage. Hopefully, your city, county, or state has an opt out provision. Why is the opt out important? We have observed that these meters can be pulsed - not only damaging appliances, but can combust and start fires.

LANDLORDS BE ADVISED - We discovered that our utility offered OUR apartment tenants an electric cost savings if the tenant agreed to allow the utility to add a wireless disconnect to our HVAC equipment, which in our case was mounted on our second floor roof. Without our knowing, as owners, many tenants circumvented our consent which could have terminated our HVAC warranties - and our possible liability exposure should an injury have occurred to the utility contractor - plus the potential for roof surface damage.

Eliminate all wireless devices - this would include hands-free phones which need to be corded - when the EMF is measured these hands-free phones test similarly to cell phones.

Caution with ALL the light bulbs - including LED LIGHTS and new Thermostats that can be remotely controlled by your utility.

Caution - Wireless baby monitors. Also, note many baby monitors were hacked and GROWLING noises were transmitted into the babies rooms.

Wrap cell phones in mylar multiple times until the phone will not ring.

Turn off ALL WiFi - BEST to Hardwire ALL devices.

Unplug everything typically plugged into outlets.

Get a surge protector.

Turn off and unplug your internet router, smart and non-smart TVs, printers, and any other wireless devices that is able to connect wirelessly or not connect wirelessly. And if you have Energy Star - kitchen appliances such as refrigerators, freezers, stoves, dishwashers, and microwaves, unplug all devices, along with stoves. Please consult an electrician about the actions you plan to take. Keep in mind these appliances work in tandem with your wireless smart electric meter - sending frequencies pummeling through your homes and YOU while your electric usage is ultimately collected by your smart electric and gas meters.

Dirty electricity is another HUGE DANGER. We have found it useful using GRAHAM STETZER filters that plug into your indoor outlets sending frequencies BACK OUT through your electrical wiring. (Stetzer Electric, Inc.)

THE ABOVE IS A LIST OF ACTIONS YOU CAN CONSIDER AND IS NOT ALL INCLUSIVE.

The WIRELESS Alerts WILL become nonstop and CONTINUALLY ALERT folks daily about various weather weapon events, financial crisis, community unrest, power outages, water shortages, floods, droughts - this alert list is endless. Folks will suffer from blood shock and - fear and be easily manipulated by those that are “targeting” our communities with ALERTS while attacking global populations with directed energy weapons.

Here is an example of an earthquake alert -

<https://www.pressdemocrat.com/article/news/late-night-phone-alert-tells-mendocino-county-to-brace-for-4-7-magnitude-ea/>

Late-night phone alert tells Mendocino County to brace for 4.7 magnitude earthquake.

ShakeAlert, the U.S. Geological Survey’s system uses wireless sensors to detect ground motion. Using about one second worth of data — the USGS estimated the location of the earthquake, the size of the earthquake... and the amount of shaking that could happen around that earthquake.

17,000 - MyShake app users saw the estimated 4.7 magnitude on their screens with the message “drop, cover, and hold on.”

Blue Tooth

BLUE TOOTH IS WIRELESS!

Solar installations are grid-tied with a wireless smart meter, with the understanding that users will get their unused electricity “rebated” off their electric bills (i.e., credits).

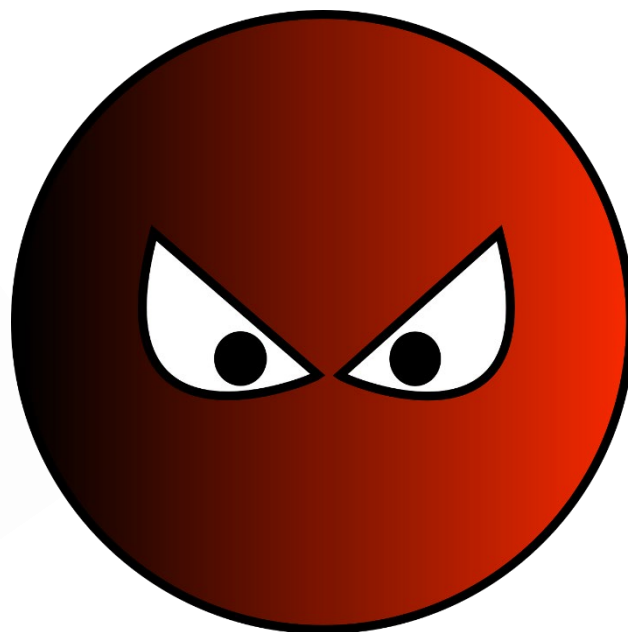
→ Check to see you have Two Smart Meters one on your house and one on your solar

Do not use lithium-ion batteries for ANYTHING SOLAR – these batteries are highly combustible and can be hit with directed energy weapons to ignite and explode.

The FEMA Executive Orders

- Allows the Housing and Finance Authority to relocate communities, build new housing with public funds, designate areas to be abandoned, and establish new locations for populations.
- Allows our de facto corporate government to take over all models of transportation and control of highways and seaports.
- Allows our de facto corporate government to seize and control the communication media.
- Allows our de facto corporate government to take over all electrical power, gas, petroleum, fuels and minerals.
- Allows our de facto corporate government to take over all food resources and farms.

**PURE
EVIL**



HEALTH SYMPTOMS FROM ALL WIRELESS DEVICES

INCLUDING MILITARY WEAPONIZATION OF THE ATMOSPHERE (COMPONENT OF CHEMTRAILS)

- Confusion
- Short term memory loss
- Inability to focus
- Brain fog/sluggish thinking
- Difficulty concentrating
- Headaches
- Migraines
- Vision disruption or eye problems
- Eye pain
- Cataracts
- Head or chest pressure
- Allergies
- Difficulty breathing
- Respiratory problems
- Slow reaction time
- Sleep disruption
- Insomnia
- Night sweats
- Nightmares
- Dizziness
- Disorientation
- Balance Problems
- Agitation
- Anxiety
- Depression
- Suicide
- Tension
- Irritability
- Tremors
- Nervousness
- Seizures
- Vertigo
- Nausea or vomiting
- Flu-like symptoms
- Digestive difficulty
- Nose bleeds
- Hair Loss
- Rapid Aging/oxidative damage
- Skin problems including rashes
- Skin irritation/dryness
- White Noise 24/7
- Ringing or buzzing in ears
- Ear pain
- Tinnitus
- Bed wetting
- Urinary problems
- Behavioral problems in children
- Pets get jumpy
- Mood disorders
- Lethargy
- Exhaustion
- Chronic fatigue
- Lost productivity/sick days
- Loss of employment
- Unusual family conflicts
- Disintegrating relationships
- Disturbs Blood Brain Barrier Allowing Toxins to Enter
- organ and brain damage
- Psoriasis
- Autoimmune disease
- Lupus
- Damages mitochondria
- Free radical damage and aging
- Worsening existing poor health
- Demineralization of cells/tissue
- Impotence
- Infertility
- Birth defects
- Life span decreases by +/-8 years
- Heart Attack
- Pacemaker defibrillation
- Circulation problems
- Joint difficulty
- Muscle pain
- Fibromyalgia
- Dementia
- Personality changes
- Alzheimer's, Parkinson's, ALS Amyotrophic Lateral Sclerosis
- Childhood cancers increase
- Brain tumors
- Rare Deadly Brain Gliomas
- Leukemia
- Cancer
- Diabetes
- Heating beamed on humans that mimics a high fever
- Rhinitis (inflammation nasal membranes)
- Asthma
- Allergies such as hay fever
- Food allergy
- Atopic dermatitis (inflammation of the skin)
- Itching and chapped skin on the trunk
- Rheumatism (painful condition of the joints and muscles characterized pain and stiffness)
- Benign uterine fibroid tumors
- Bone loss/osteoporosis
- Dehydration
- Kidney damage
- Electronic Harassment-Stalking-Mind Control
- Controlling thoughts, Directing physical Actions. V2K Voice to Skull
 - Violent behavior
 - Autism
 - ADHD
 - Weakened immune system
 - Physical weakness or pain
 - High blood pressure
 - Leg cramps
 - Stiff neck or back
 - Shuts down the cells-cell death
 - Changes in genetic makeup
 - DNA breakage
 - EMF causes mercury dental filling vapor to leak causing



References:

*Bio Initiative Report: Over 2,000 Scientific Studies www.BioInitiative.org

*AAEM-American Academy of Environmental Medicine - Position Paper "Electromagnetic and Radio Frequency Fields Effect on Human Health", including Wireless Technologies and Smart Meters

*Department of the Army - Fort Mead "Bioeffects of Selected Nonlethal Weapons" Radiofrequency directed energy and Microwave (EMF/RF Radiation) on Targets

*NASA: the Future of Warfare Document - Page 50 - Effects of Low Power Microwaves

www.StopTheCrime.net



CELL TOWER LOCATOR MAP

This map is being provided so you will be able to identify where the towers are...these must be avoided in order to survive!

LEARN WHERE YOU'RE BEING TARGETED!

<https://www.ubersignal.com/blog/cell-tower-locations#:~:text=Use%20an%20app%3A%20Download%20a,your%20phone%20is%20connected%20to>

Find Cell Towers Near Me: The Ultimate Guide for 2023



The key to finding out where you're being targeted lies in finding the nearest cell tower location.

Understanding Cell Towers

What is a Cell Tower and How Does It Work?

Cell towers, also known as cell phone towers or cellular towers, are tall structures that transmit and receive radio signals. These towers facilitate wireless communication between mobile devices and the network. Mobile phones connect to the nearest cell tower to send and receive voice, text messages, and data.

When you make a call or send a text, your mobile device communicates with a nearby cell tower, which then transmits your signal to the intended recipient. As you move, your device

seamlessly switches from one tower to another, ensuring that you maintain a strong and stable connection. If you're struggling with poor reception, finding the nearest cell tower can help improve your signal strength.

Understanding the location of cell towers is essential for those looking to install signal boosters for your home, vehicle signal boosters, or signal boosters for your business. A better understanding of cell towers and their locations can help you determine where the weaponized frequencies are originating and help you avoid these.

Types of Cell Towers

4G Towers



4G (fourth generation) cell towers provide faster data speeds and improved voice quality compared to their 3G predecessors. These towers use advanced technology to support high-speed internet, video streaming, and other data-intensive applications on smartphones and other devices. Most 4G cell towers are equipped with LTE (Long-Term Evolution) technology, which is the standard for high-speed wireless communication.

5GTowers



5G (fifth generation) cell towers represent the latest advancement in wireless communication technology. They offer faster data speeds, lower latency, and increased capacity compared to 4G towers. 5G tower locations are usually found in urban areas and high-density population centers, as they can handle more simultaneous connections. As 5G technology continues to roll out, more and more users are looking for [5G signal boosters](#) to take advantage of the improved network capabilities.

It's essential to know what a 5G tower looks like in order to identify them in your area. 5G towers are often smaller and more inconspicuous than traditional cell towers. They can be mounted on existing structures like lamp posts, traffic lights, or rooftops. Since 5G signals have a shorter range than 4G, 5G towers are placed more closely together, resulting in a denser network of smaller cells.

Macrocells, Microcells, and Picocells

Cell towers can be categorized into three main types based on their coverage area and capacity: macrocells, microcells, and picocells. Each type serves a different purpose and can be found in various environments.

Macrocells are the most common type of cell tower and provide the widest coverage area. They can cover several miles and serve thousands of users simultaneously. Macrocell towers are often found in rural areas, along highways, or in suburban neighborhoods to provide reliable coverage for residents and travelers.

Microcells are smaller than macrocells and have a more limited coverage area, typically up to two miles. They are used in urban areas where the demand for wireless communication is high, and the macrocell network may become congested. Microcells can be mounted on rooftops, streetlights, or other existing structures to provide additional capacity and improved signal quality.

Picocells are the smallest of the three and have a coverage area of only a few hundred feet. They are commonly found indoors, such as in shopping malls, airports, or office buildings, to provide targeted coverage in areas where the macrocell or microcell networks may not penetrate well. Picocells help ensure reliable connectivity in high-traffic locations with dense populations.

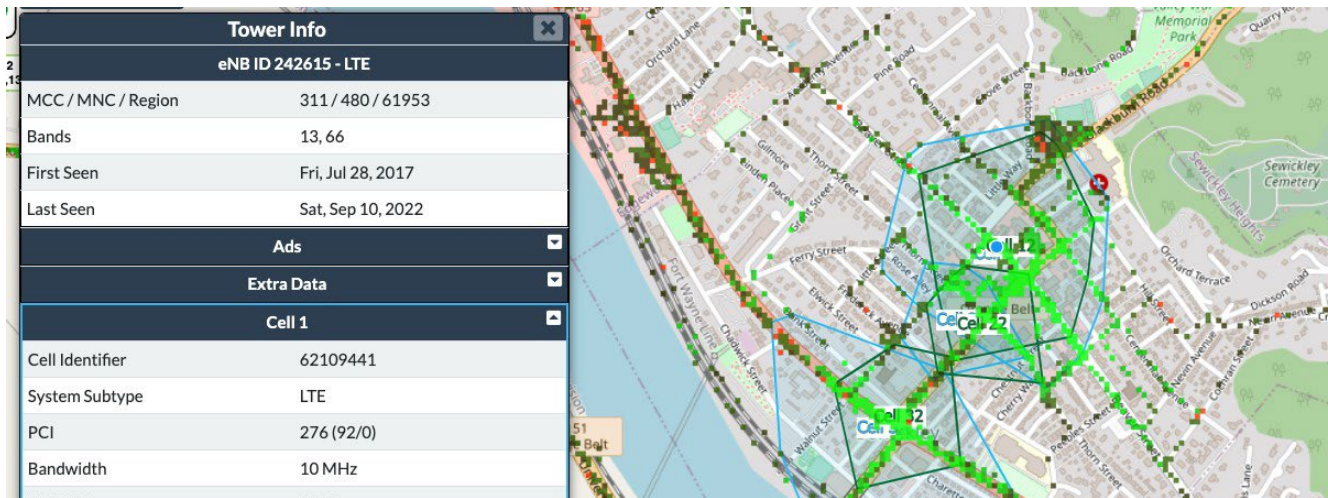
Tools for Finding Cell Towers

When you're trying to improve your cell signal, knowing the location of your nearest cell tower is crucial. There are several tools available to help you find cell towers near you, including cell

tower maps, cell phone apps, websites, and the FCC cell tower map. In this section, we'll explore these tools and discuss how to use them to locate the nearest cell towers.

Cell Tower Maps

Cell tower maps are visual representations of cell tower locations. These maps make it easy to see where cell towers are located in relation to your current position. One popular resource is [CellMapper](#), an interactive map that displays cell towers worldwide. You can filter the results by carrier, such as Verizon cell tower or AT&T tower map, to find the towers that are most relevant to your needs.



CellMapper is a challenging website to use and it might not seem like it's working to begin with. You need to expand the menu in the top left corner and start inputting information to bring up data.

Here are some steps to get started with CellMapper:

1. Expand the menu and click "Provider".
2. Choose your carrier and the network that you want to find towers for. We recommend starting with 4G LTE, as there is much more data there, and then trying 5G afterward. Leave the Band option to "All Bands" unless you have a specific band you're targeting. Click the "X" button to close.
3. Next, click "Search" and enter your address, then hit enter.
4. Finally, click "Settings" and confirm that the "Display Towers" options are checked.
5. It may take a few seconds for results to appear. Zoom out if you don't see anything initially. Click on a tower to see detailed information about it.

Another good website option is [AntennaSearch](#). The interface is significantly easier to use than Cell Mapper, but the tradeoff is that it does not provide as much data either. This is a good

starting point to get a general idea of what towers are around you, and then you can dive into a more detailed tower data provider for more information if needed.

Keep in mind that cell tower maps may not always be 100% accurate, as new towers are built and old ones are decommissioned. However, they can still provide a helpful starting point for locating nearby cell towers.

Cell Phone Apps

There are several cell phone apps available that can help you find cell towers near you. Here are some of our favorite options:

- [OpenSignal](#) (iOS / Android)
- [weBoost](#) (iOS / Android)
- [CellMapper](#) (Android)
- [Network Cell Info Lite](#) (Android)
- [Cell Tower Locator](#) (Android)
- [Tower Collector](#) (Android)

One popular option is [OpenSignal](#), available for both [iOS](#) and [Android](#). OpenSignal displays a cell tower map and provides information about your current signal strength, making it easy to determine if you're close to a tower. Other apps like [Network Cell Info Lite](#) and [Cell Tower Locator](#) (both Android-only) can also help you find nearby cell towers.

Some apps even allow you to contribute to their database by collecting data on cell tower locations. For example, [Tower Collector](#) (Android-only) lets users submit information on cell towers they encounter, helping to create a more accurate and up-to-date resource for others.

These apps are especially useful if you're looking for a specific carrier's cell tower and want to narrow it down to a Verizon tower map or an AT&T tower map.

Websites

In addition to cell tower maps and apps, there are several websites that can help you find cell tower locations. [AntennaSearch](#) is a popular website that provides information on cell towers and antennas in the United States. You can enter your address or coordinates, and the site will generate a list of nearby towers and antennas, along with their distance from your location. It also provides details on the tower's height, owner, and registration number.

Another useful website is the [FCC's Antenna Structure Registration \(ASR\) system](#), which allows you to search for registered towers and antennas in the United States. You can search by location, registration number, or owner name. For more information on wireless telecommunications, you can also visit the [FCC's Wireless Telecommunications Bureau \(WTB\) website](#).

Keep in mind that these websites may not provide real-time information on cell tower locations, as new towers are built and old ones are decommissioned. However, they can still be valuable resources for locating nearby cell towers.

FCC Cell Tower Map

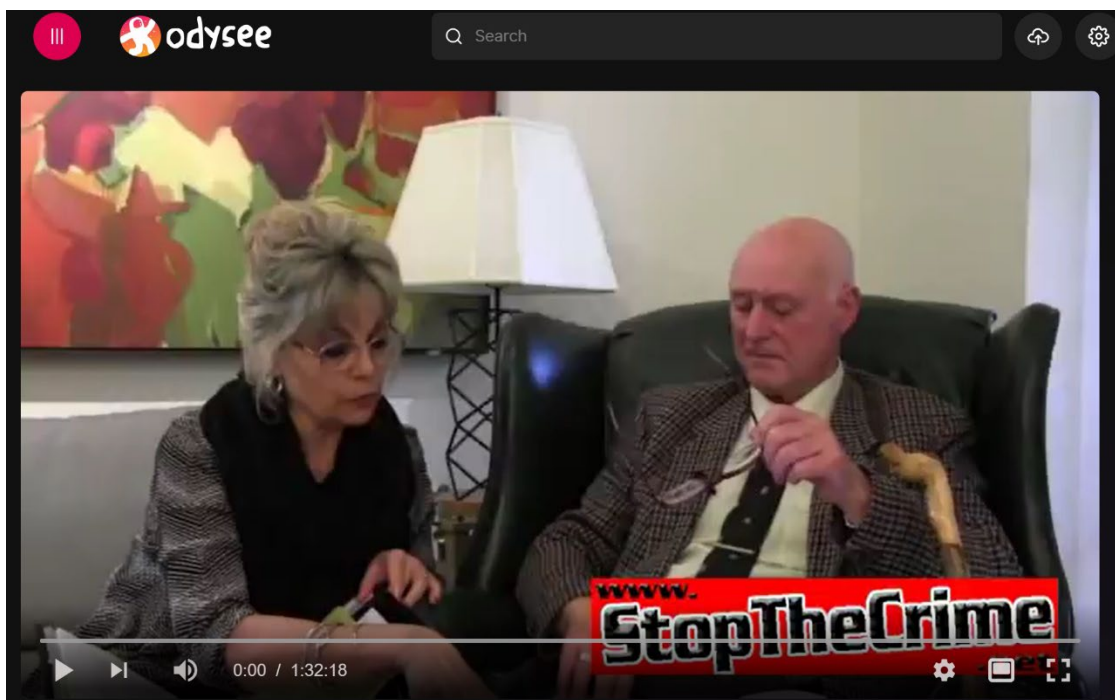
The FCC cell tower map is another tool that can help you find cell towers near you. The FCC maintains a database of registered antenna structures, including cellular towers, across the United States. You can access this information through the [FCC's Antenna Structure Registration \(ASR\) system](#) or by using specialized websites and apps that rely on the FCC's data.



We must do all we can to be harder to KILL!

FINALLY...

WATCH THE "COOKING OF HUMANITY" INTERVIEW WITH DEBORAH TAVARES & MICROWAVE WARFARE EXPERT BARRY TROWER



<https://odysee.com/@StopTheCrime:d/the-cooking-of-humanity:a>

